

Luminex Mainframe Virtual Tape Solutions



CAVMEN:
Chicago Area
VM (and Linux)
Enthusiasts

Sharon Nelsen
Account Executive, Central Region

Marty Sissman
Systems Engineer

Discussion Topics

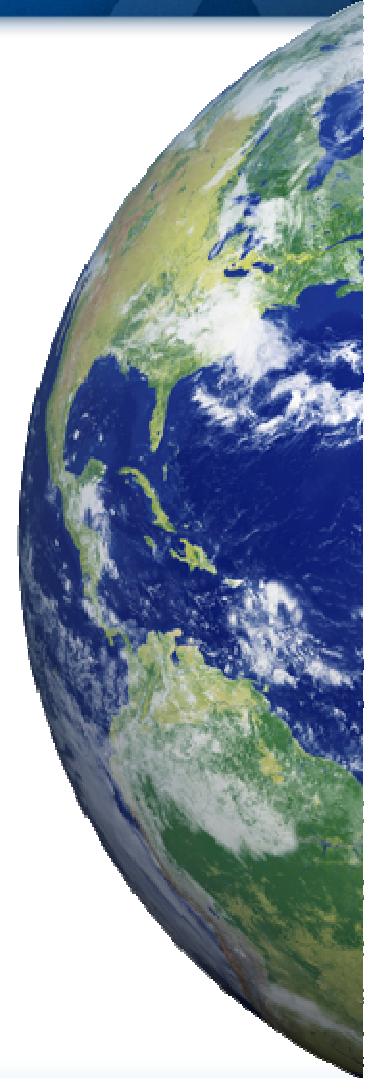


- Luminex At A Glance
- Pre-Sales Consulting
- Common Goals and Requirements
- MVT Solution Overview
- Support and Installation Services

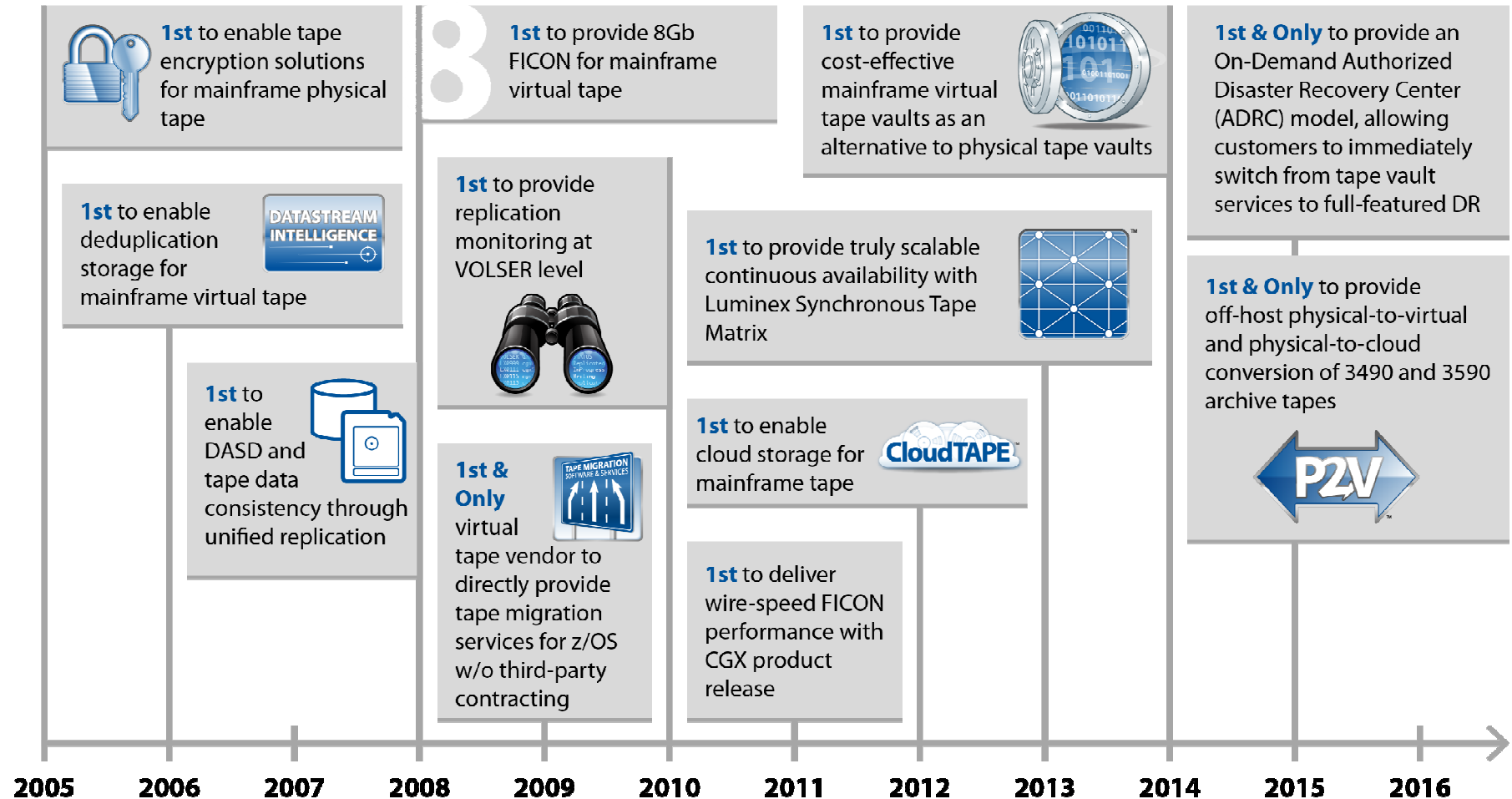
Luminex At A Glance



- Delivering z/OS, z/VM & z/VSE data solutions worldwide for 20+ years
 - Enabling mainframes to leverage distributed systems resources via native I/O channels
 - Renowned for its industry-leading, enterprise-class mainframe virtual tape solutions
- World Alliance of VSE & VM (WAVV) Sponsor 2006 – 2014
- SHARE Sponsor 2000-2016
- IBM Business Partner
 - Strategic Partner for IBM ProtecTIER Mainframe Edition



Luminex's Heritage of Innovation



Luminex Customers

Partial List of Domestic Accounts



					
PA	MA	CA	CO	NY	NE
					
TN	FL	MA	CA	CA	NJ
					
USA	UT	CA	NY	PA, UT	MS
					
GA, CA	FL	FL	WI	TX, AR	MI
					
USA	USA	USA	ID	AL	MI

Sample Luminex z/VM and z/VSE Customers



AL



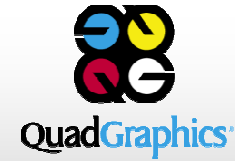
IL

BIM-EPIC



IL

BIM-EPIC



IL



ID



CA



Green Bay Packaging Inc.

WI



WA



NY

CA Dynam



CA



TX



FL

BIM-EPIC



MA



UK



PR



PH

CA Dynam

Typical Customer Goals and Requirements

Luminex Virtual Tape Solutions Can Improve All Tape Operations



**Replace Aging
Infrastructure**

**Improve Disaster
Recovery Plan**

**Improve Data
Security**

**Reduce or Eliminate
Physical Tape**

**Reclaim Data Center
Floor Space**

Higher Availability

Reduce Costs

**Increase
Performance/
Efficiency**

What Else?

Luminex Subject Matter Experts

Consultants for all Mainframe Virtual Tape Options



- Luminex SEs are mainframe virtual tape subject matter experts
 - Pre-sales consulting & tape study/analysis is available
 - Sizing & configuration recommendations are available
 - They'll architect the best solution & install it!
- Experts in replacement of existing mainframe physical & virtual tape products



Luminex Solutions vs. Physical Tape

Enterprise-class Solutions for All Aspects of Mainframe Tape Use



- Less floor space required
- Less cost for physical tape maintenance, media, shipping and off site storage
- Less time required to test and restore during disaster recovery
- Less complexity for security, encryption and key management
- Less time and fewer IT resources to manage



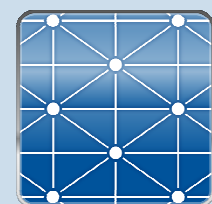
Luminex Solutions vs. Physical Tape

Enterprise-class Solutions for All Aspects of Mainframe Tape Use



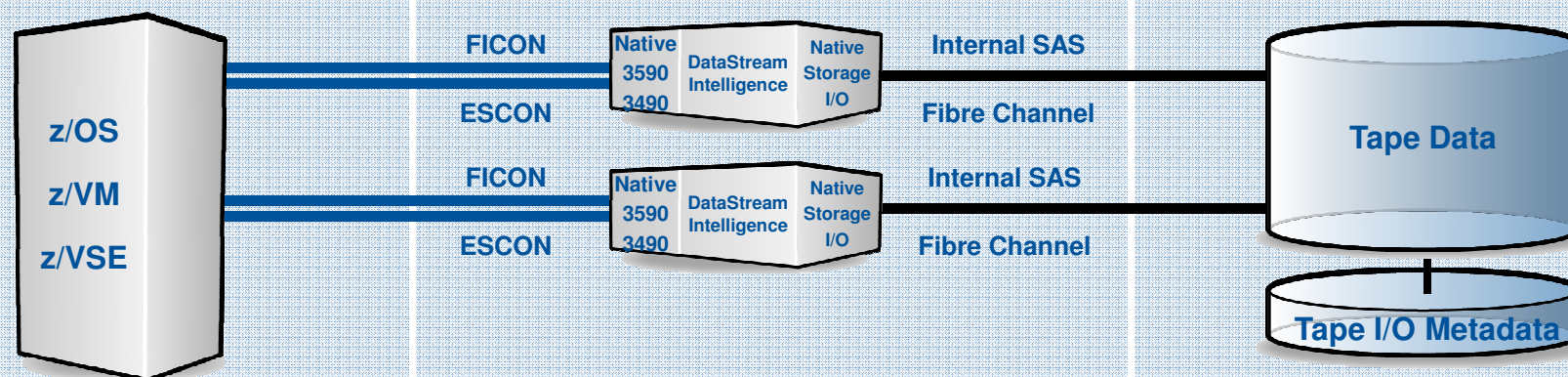
- More capability in a smaller footprint
- More storage options (including internal, external storage, cloud and remote vaulting)
- More security (no physical tapes to ship)
- More of the industry's leading disaster recovery options
- More powerful continuous availability options
- More value, efficiency and capability

2U



Luminex MVT Environment

How the Solution Works



Mainframe

- Application transparent – non-intrusive
- No MIPS required
- z/VM, z/VSE & z/OS supported
- Works well with all major tape management systems

Control Unit

- CGX control unit software emulates 3490 or 3590 mainframe tape drives
- “Wire Speed” up to 8 Gb/s FICON
- Hardware compression with software failover
- DataStream Intelligence™ maximizes compression
- Replication for backup/DR with VOLSER-level monitoring
- Modular design makes adding additional capabilities easy and cost effective

Storage

- Internal or Fibre Channel attached
- Mainframe tape volumes stored as standard files
- RAID data protection
- CloudTAPE ready

A Better Fit Makes A Better Solution



MVTi Series

- 2 FICON or ESCON channels
- 10-30 TB host capacity (with 3:1 compression)
- 2U rack mount footprint



MVTe Series

- 2 or 4 FICON or ESCON channels
- Virtually unlimited capacity – PBs and beyond



Optional Features



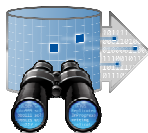
Synchronous Tape Matrix

Continuous availability with 1+n mirrored writes and non-disruptive auto failover/restore



P2V

Off-host physical-to-virtual and physical-to-cloud conversion of 3490 and 3590 archive tapes



Luminex Replication with RepMon

Improve your disaster recovery plan with remote replication to one or more DR sites and VOLSER-level replication monitoring and auditing



Push Button DR

Disaster recovery and testing with “push button” ease



CGSafe

Encryption and key management



LTMon

Integrated, centralized management from the mainframe console

Data Vaulting Options



CloudTAPE

Cloud-based tape vaulting solution for mainframes



MVT Vault

Cost-effective virtual tape vaults for remote, off site storage



Tape Migration Software and Services

Seamlessly transition physical and virtual tapes with exact copies of original VOLSER numbers and labels



TMACS

Tape Monitoring and Allocation Control System intercepts tape device allocations and steers them to tape devices according to a customizable set of rules

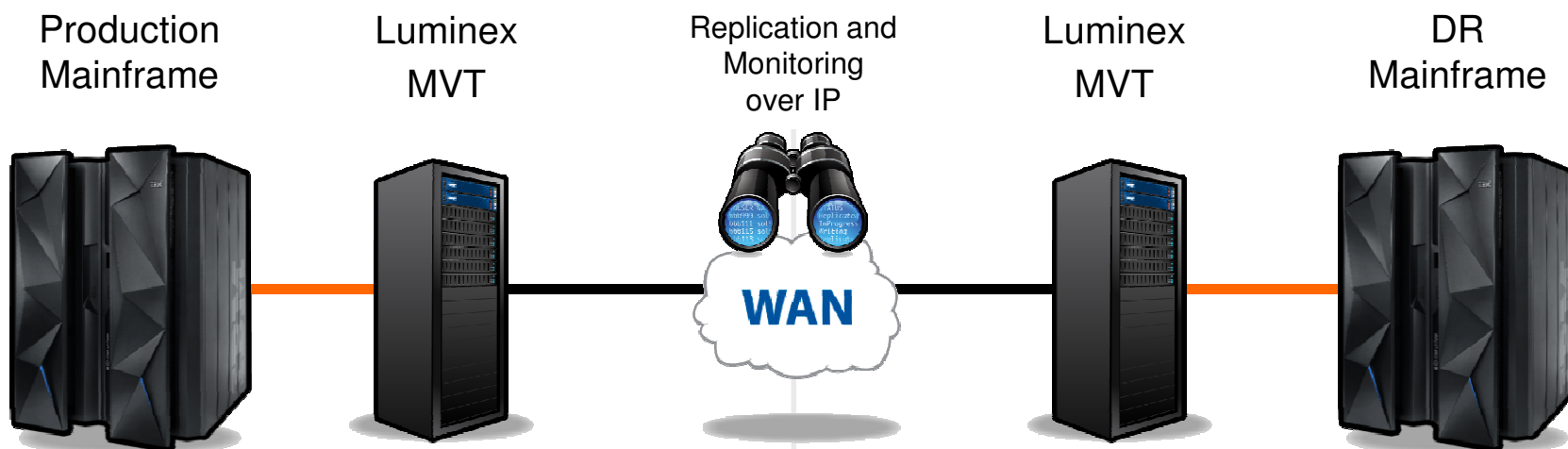
Luminex MVT Environment

Production and DR Site Configuration Example



Production Site

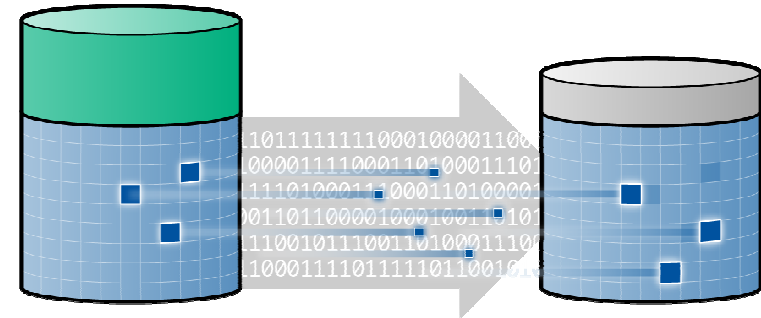
Disaster Recovery Site



Luminex Replication for MVT



- Control unit-based replication engine
- Asynchronous
- Flexible policies for number of copies and locations
 - One-to-Many
 - Cascading
- Vaulting to the Cloud
- Advanced DR functionality included
 - RepMon replication monitoring and auditing
 - Push Button DR

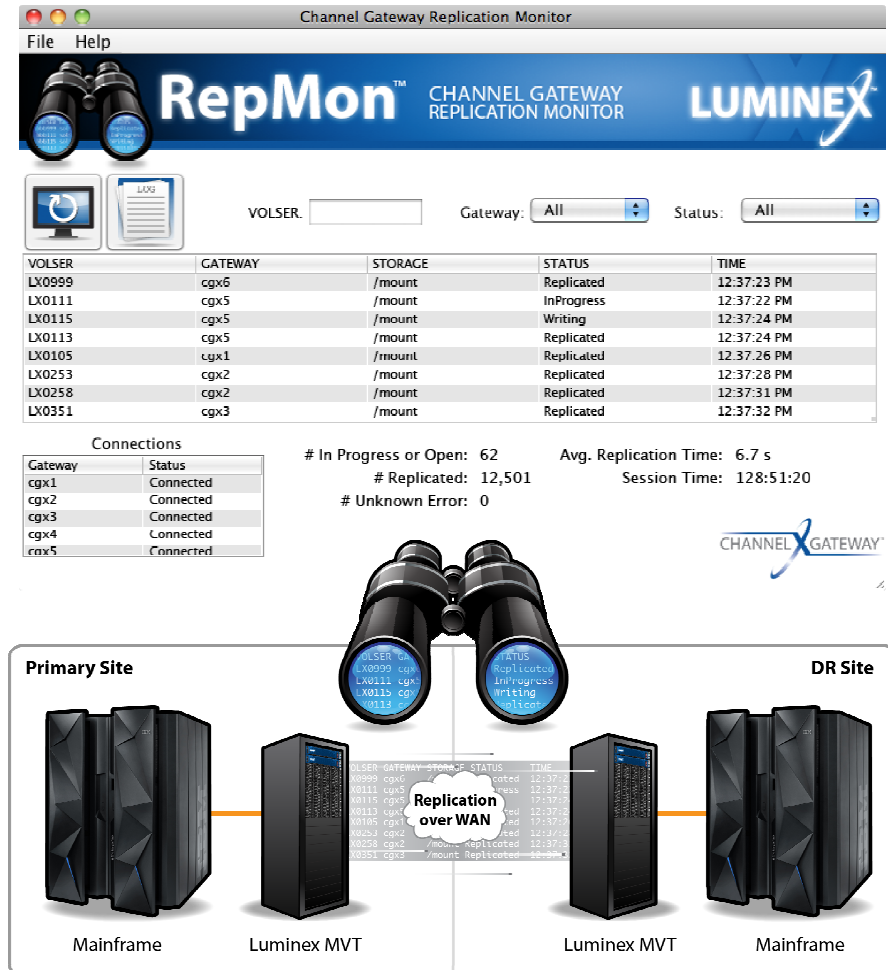


RepMon: Replication Monitor



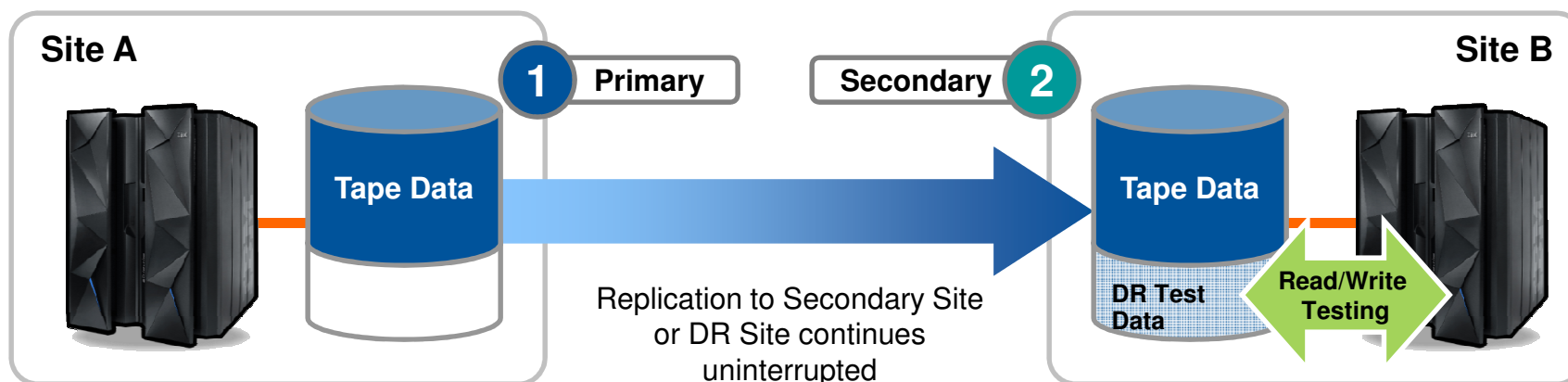
Provides **real-time status monitoring and logging** of virtual tape data writes and replication to a remote disaster recovery site at the VOLSER level

- Identifies Write and Replication Status of Mainframe Tape VOLSERs
- Identifies if virtual tape data at DR is still consistent with the primary datacenter
- Provides visual and audit capabilities to confirm when backups reach DR

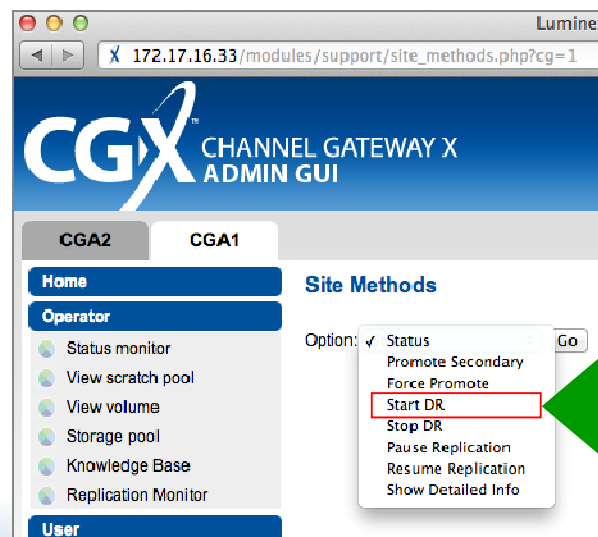


Push Button DR Testing

Replication During DR Testing



Prepares DR environment for read/write testing; original Tape Data remains untouched



Start DR

Push Button DR demo video



Luminex Channel Gateway - Mozilla Firefox

Luminex Channel Gateway

https://cga1/modules/operator/status_monitor.php?cg=0

CGX CHANNEL GATEWAY X ADMIN GUI

Logged in as admin | Logout

cga1

cga1

Home

Operator

- Dashboard
- Reports
- Status Monitor
- View Scratch Pool
- View Volume
- Storage Pool
- Knowledge Base

User

- Load / Unload Tape
- VOLSER Attributes
- Physical Tape Copy

Support

- Server Options
- Site Methods
- Inventory Audit
- Audit Logs
- Get Logs
- XMig

Administration

Status Monitor

Gateway	Device	Session	Request	Tape Display	VOLSER	Activity	Position
cga1	D900	(CU0:0)	-	KXD900X	-	-	0 B
cga1	D901	(CU0:1)	-	KXD901X	-	-	0 B
cga1	D902	(CU0:2)	MXD902XS	XD902XS	XD902X	reading	2.917 GB
cga1	D903	(CU0:3)	MXD903XS	XD903XS	XD903X	reading	2.901 GB
cga1	D904	(CU0:4)	MXD904XS	XD904XS	XD904X	reading	2.281 GB
cga1	D905	(CU0:5)	MXD905XS	XD905XS	XD905X	reading	2.891 GB
cga1	D906	(CU0:6)	MXD906XS	XD906XS	XD906X	reading	2.882 GB
cga1	D907	(CU0:7)	MXD907XS	XD907XS	XD907X	reading	2.879 GB
cga1	D908	(CU0:8)	-	KXXD908	-	-	0 B
cga1	D909	(CU0:9)	-	KXXD909	-	-	0 B
cga1	D90A	(CU0:A)	-	KXXD90A	-	-	0 B
cga1	D90B	(CU0:B)	-	KXXD90B	-	-	0 B
cga1	D90C	(CU0:C)	-	KXXD90C	-	-	0 B
cga1	D90D	(CU0:D)	-	KXXD90D	-	-	0 B
cga1	D90E	(CU0:E)	-	KXXD90E	-	-	0 B
cga1	D90F	(CU0:F)	-	KMCGADM	-	-	0 B

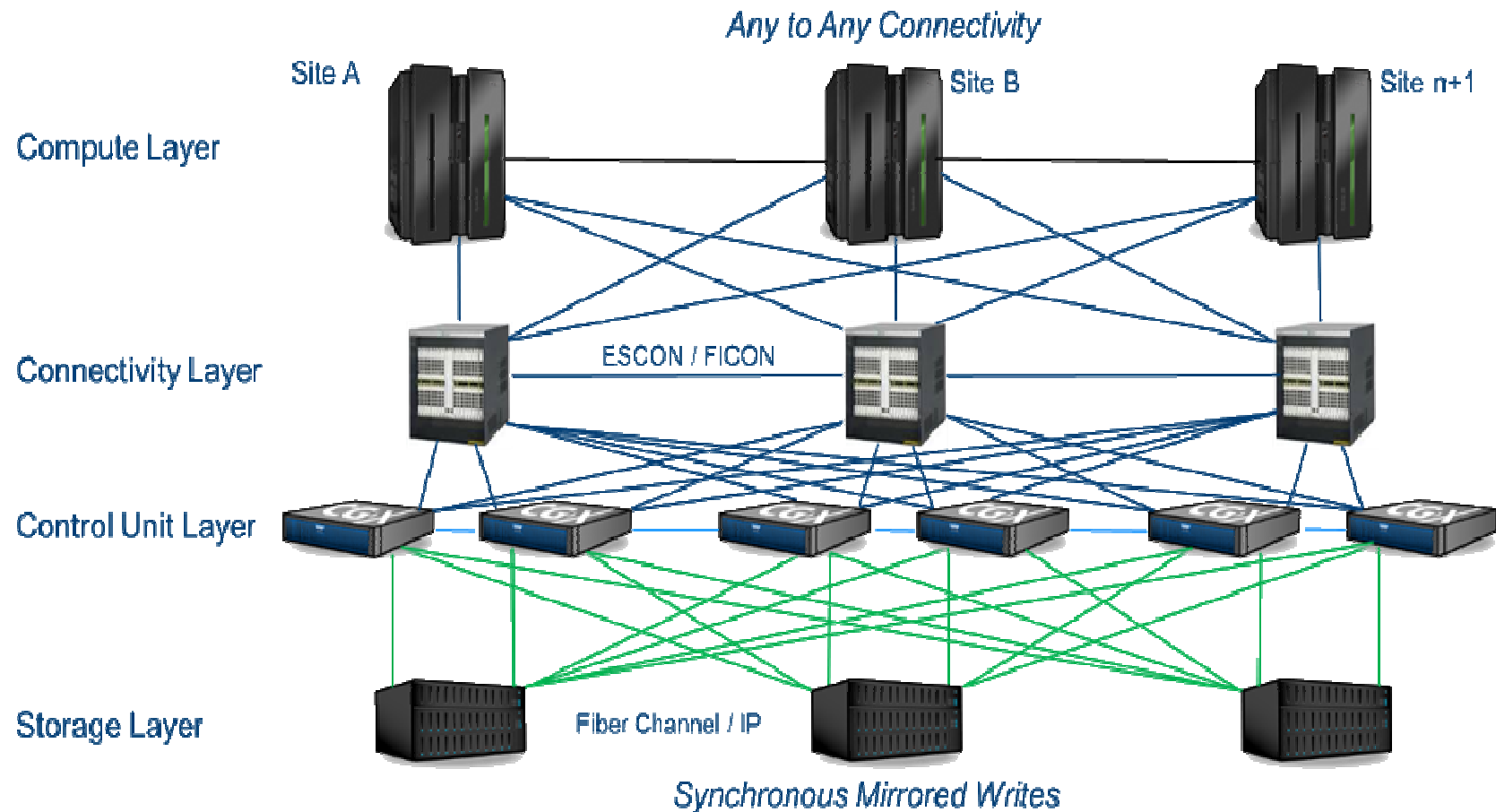
Synchronous Tape Matrix (STM)



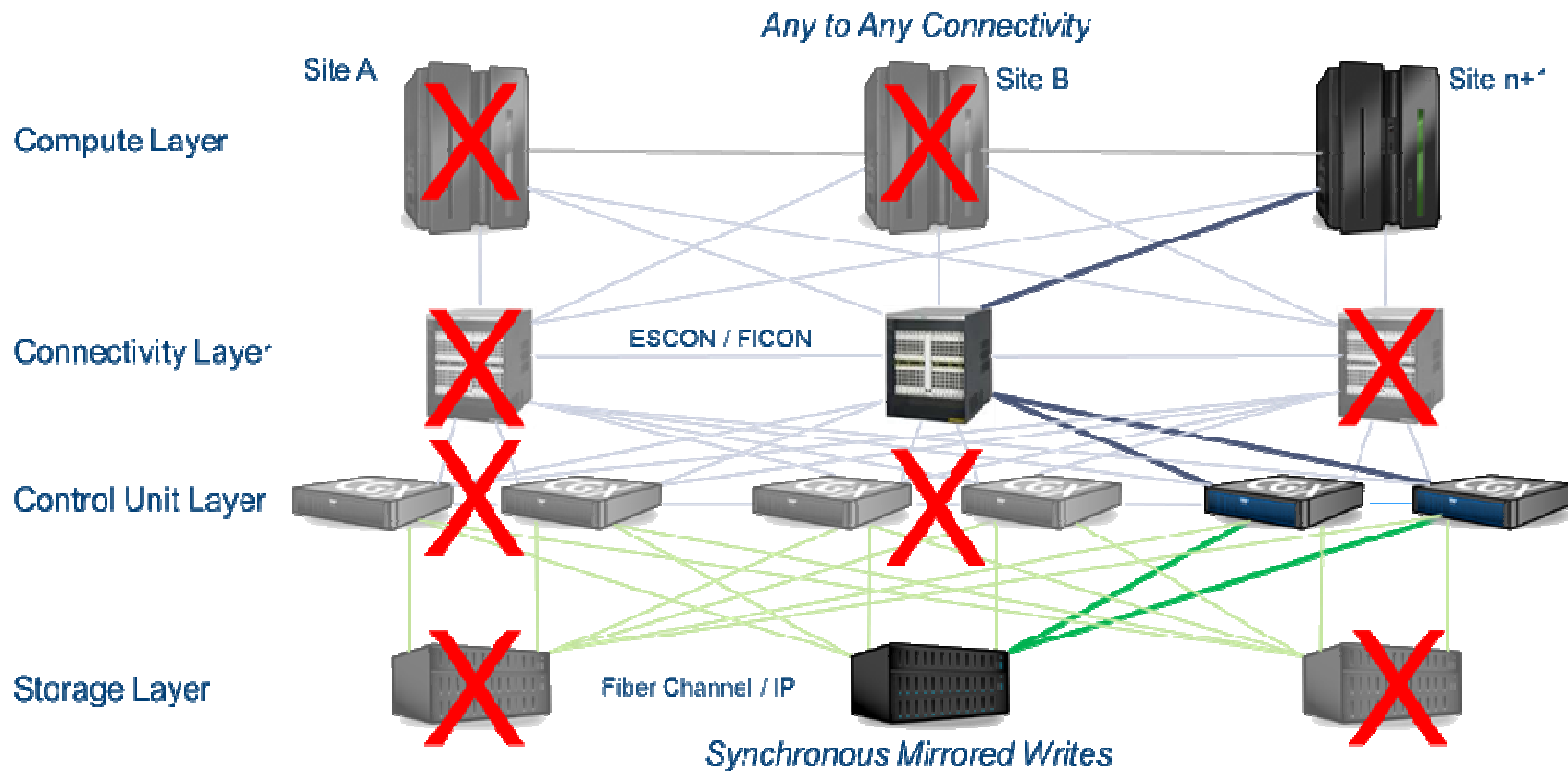
- Continuous Availability
 - Resilient architecture instantly and automatically adjusts to multiple failures without interruption
 - Data is always available for I/O
 - No downtime from failover or restore processes
- No idle components to buy
 - All components contribute to day-to-day operations, not just during failure events
- Easy to implement
 - No host scripts or policies required
- Scalable
 - No limitations for throughput, capacity or degrees of redundancy
- Modular design ensures investment protection
- Supports dissimilar storage systems and compression/deduplication technologies



Simplified STM Configuration with n -Sites



Operational STM Configuration with Multiple Failures Across Layers and Sites





Features

- Encryption & key management at the control unit level
- Eliminate costly encryption solutions based on mainframe MSUs
- AES 256-bit encryption using GCM
- Compression, encryption, and authentication in a single pass
- Optionally integrates with existing encryption and key management infrastructure

Benefits

- Avoid risk of lost or stolen tapes
- Protection from other data security issues
- Integrates into existing key management infrastructure for a single-point-of-management



No TMS? No Problem!

Features for Manual Tape Operations

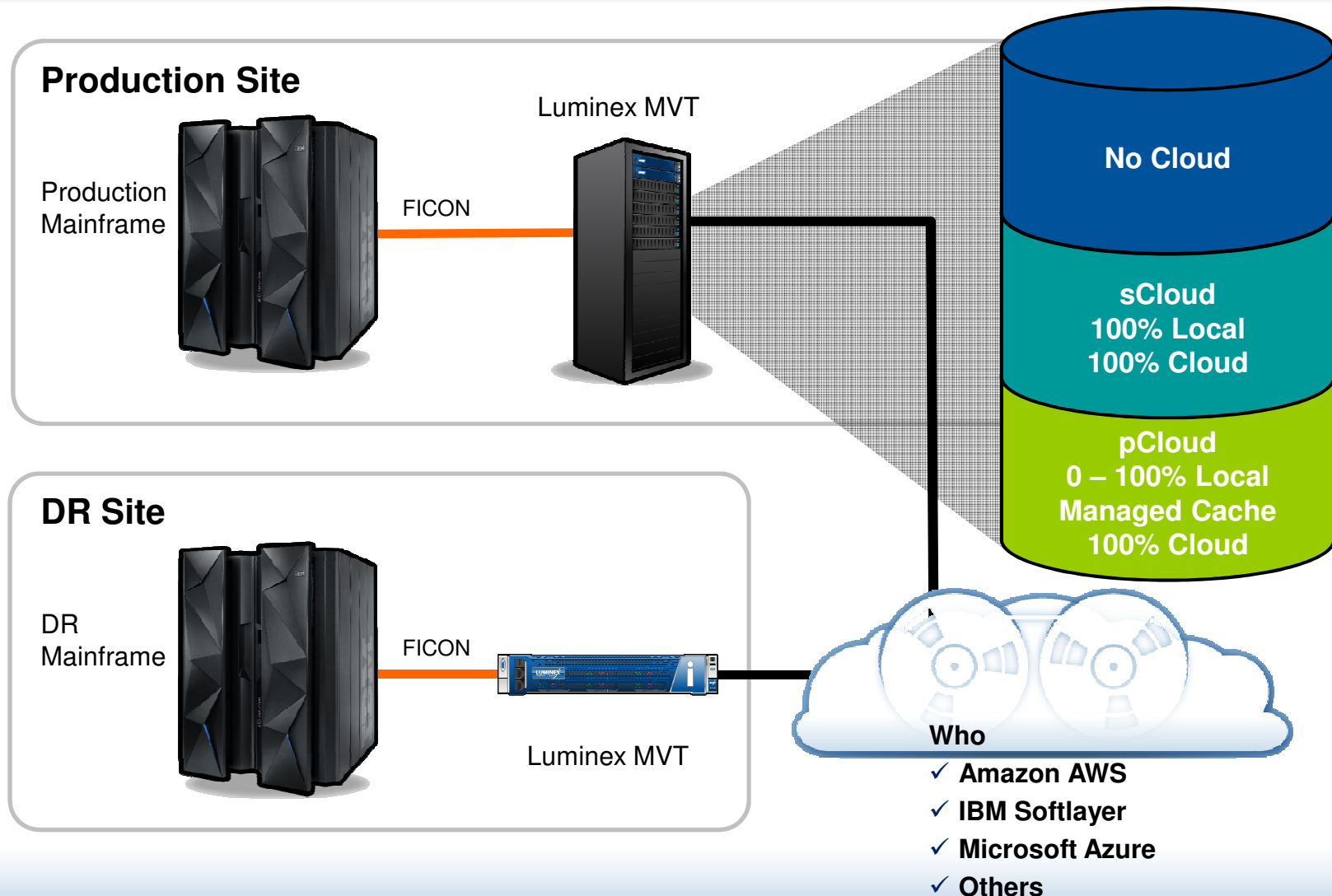


- Browser-based GUI
- Manually load/unload virtual tape volumes on any available device
- Add/modify volume attributes
 - Add notes to create a virtual "sticky note"
 - Toggle a volume between "write" and "write-protect" mode
- Statistical information on individual virtual tape VOLSERs
 - Volume label and metadata information
 - i.e. storage pool, size, last access time, compression ratio, dsn, scratch status, user notes
- Audit logs for replication status
- Four levels of functionality for different users
 - Admin, Operator, User, Support

The screenshot displays the CGX Channel Gateway X Admin GUI. The interface includes a top navigation bar with the CGX logo and 'CHANNEL GATEWAY X ADMIN GUI'. Below this is a user selection bar with 'cgx1' and 'cgx2'. A left sidebar contains a menu with categories: Home, Operator, User, Support, Security Officer, and Administration. The main content area is titled 'View Volume' and shows 'Volser Information for PT0100'. This information is presented in a structured format with fields for Storage Pool, Size, Compress Ratio, Modified, Accessed, Dataset, and Scratch. Below this is a 'Notes' section with 'Customer Information Details' including Date, Fully Qualified DSN, Programmer Name, Job Name, Pgm Name, Retention Period, Expiration Date, and Other. At the bottom of the main content area, there is a 'Volume:' input field and a 'Search' button.

Copyright © 2015 Luminex Software, Inc. - All rights reserved

CloudTAPE: Tape Vaulting to the Cloud



MVT Vault for Mainframe Data Protection



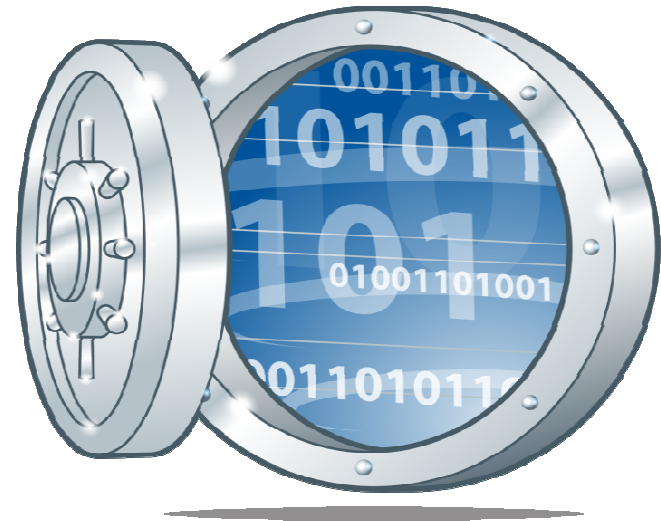
- A better alternative to physical tape vaults, including:
 - Compact, 2U (3.5") Form Factor
 - Unprecedented Price Point
 - RAID Disk Storage
 - Remote Replication & Replication Monitoring at the VOLSER level
 - Inventory Auditing



MVT Vault Series Use Cases



- 3rd Offsite Copy
 - For customers who already have virtual tape at production & DR sites
 - To meet out-of-region, SLA or other requirements
- 2nd Offsite Copy
 - For customers who don't currently have a DR site
- Recovery Center Model
 - DR On Demand and testing at ADRCs



Worldwide Support and Installation Services



- High level expertise applied early, operations restored sooner
- Remote or on-site installation services worldwide
- Immediate HW/SW assistance – 7x24x365
- Channel Gateways include remote access capability
- On-site hardware break/fix assistance within 4 hours



Thank You!



For questions and to get more information, please contact:

Sharon Nelsen

Regional Account Manager, Central Region

snelsen@luminex.com

(815) 609-7415

Marty Sissman

Systems Engineer

msissman@luminex.com

(773) 368-0363